

INFORMATION FLOWS IN PORTS, AND IN THE MARITIME SUPPLY CHAIN



IMO, April 11 2019

Raymond Seignette
Port of Rotterdam Authority

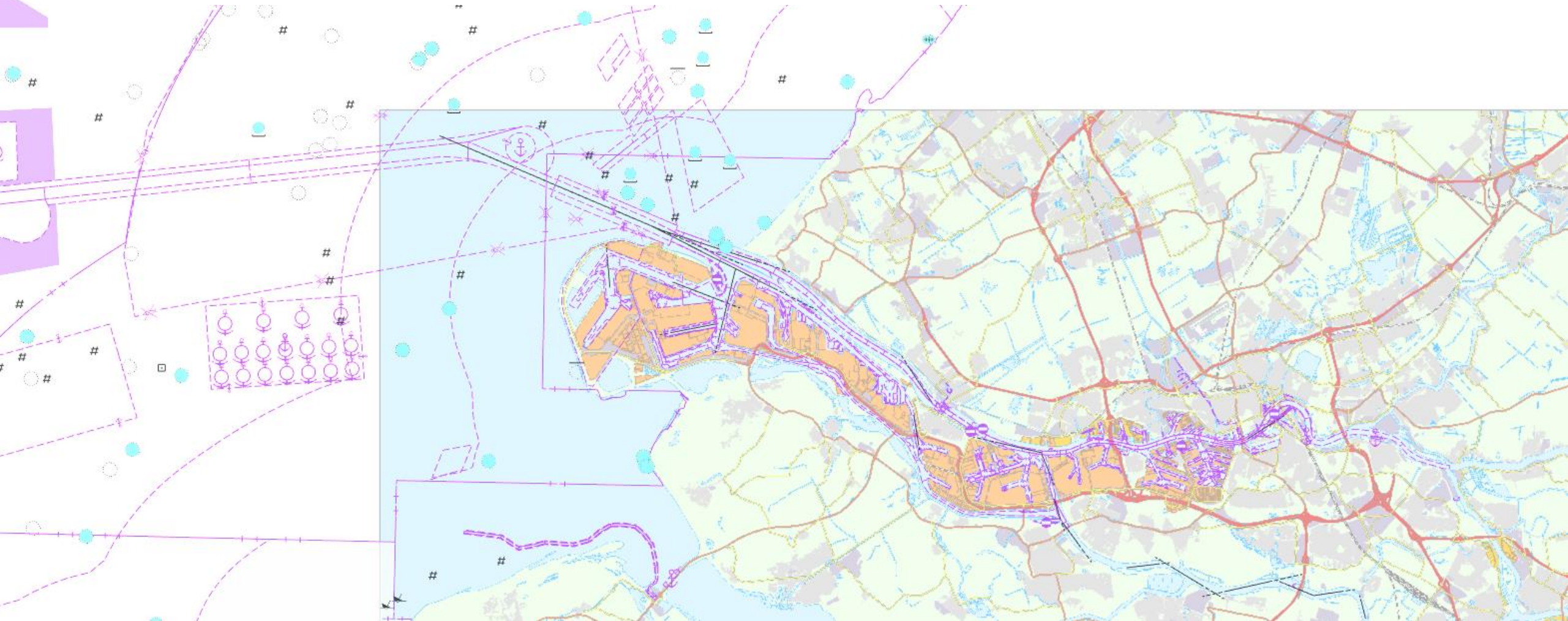


Port of Rotterdam



‘From a mariners’ perspective’

Information flows in ports for facilitating maritime transport



Port approach, port entry, port passage, manoeuvring, mooring, ..

Administrative



ETA-24h

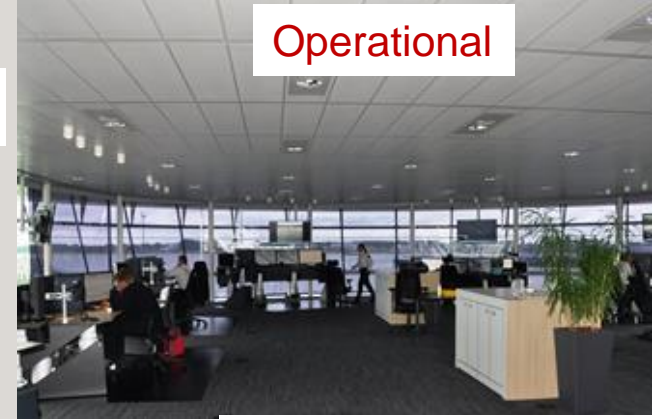


Port clearance



ATA

Operational



Reporting formalities

Port visit securities

Consult other authorities

Escort requirements

Exemptions

Tidal restrictions

Assessment of:

- nautical access to the requested berth,
- berth availability
- carriage and transshipment of dangerous goods
- Specific activities, like repairs
- Security status of the vessel (and terminal)
- Port State Control issues
- Availability of nautical service providers

Traffic situation

Actual draft (UKC)

Hydro/meteo

Berth occupancy

Incidents

Infra restrictions

Port clearance is not just a ticket to enter...



ETA (1)

ETA (2)

ETA (3)

Formal ETA
(reporting formalities)

Informal ETA
(business intelligence)

Required ETA
based on business arrangements

Ship's agent report ETA-24h
via PCS-service to
Authorities

AIS position and dead reckoning
Hydro/meteo influences by BI

Liner arrangements
Charter party

Assess ship clearance
by port authority

Plan availability of
nautical services



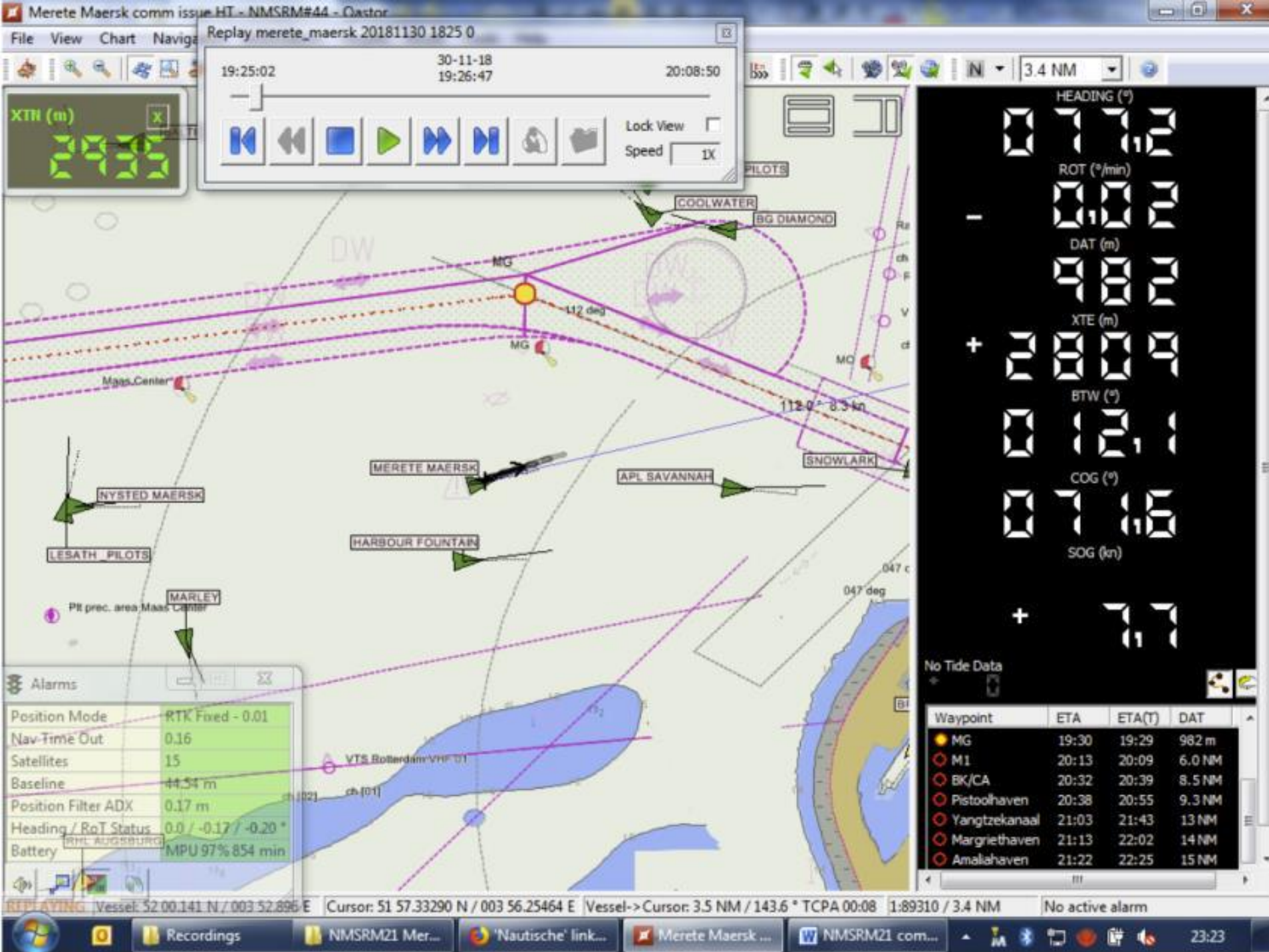
Use of applications
(Pronto, shiptracker a.o.)



Berth allocation and
slot planning by terminal

'Just in time' planning requires Coordination

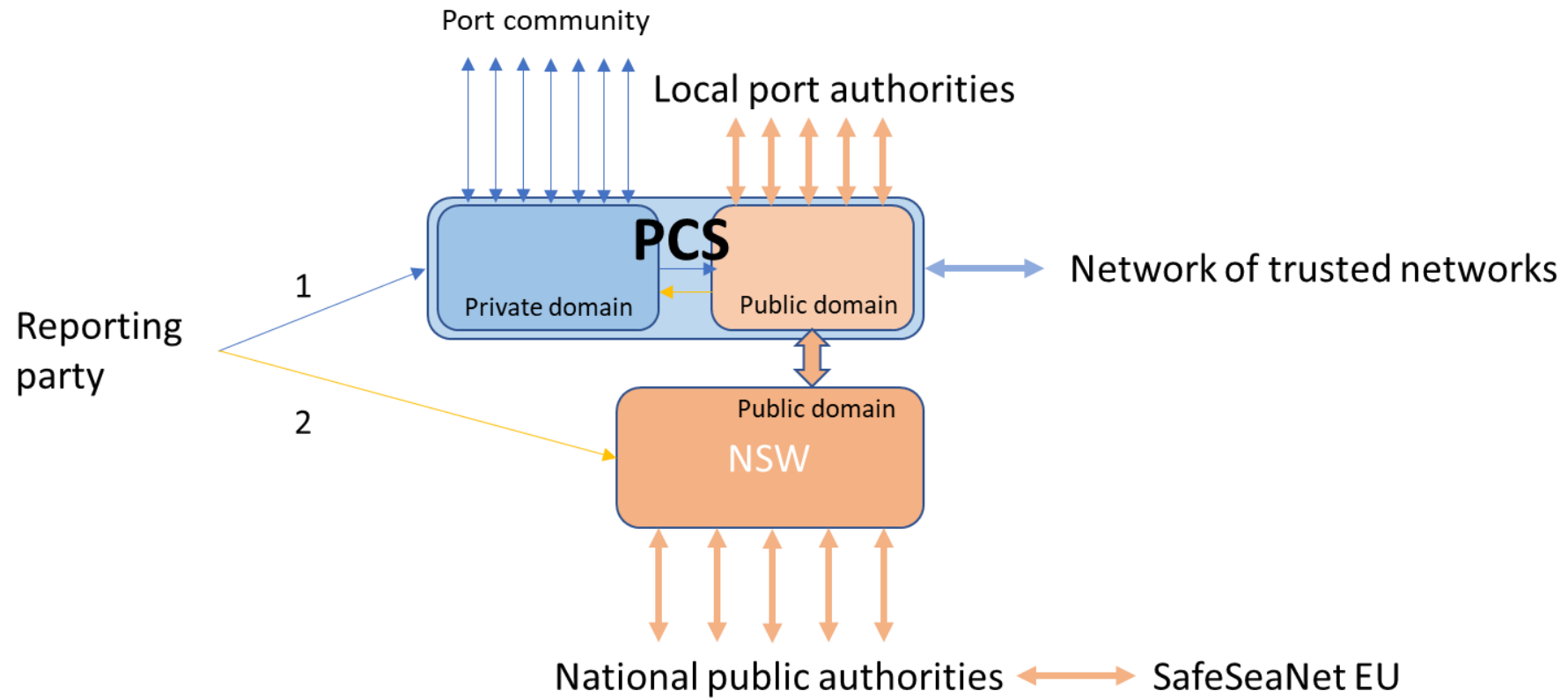
... and data analysis



Planning port passage of a 400 m. long container ship by a maritime pilot, using:

- Info from NOA
- Info from VTS
- Info from ECDIS
- Info from NMS
- Info from H/M sensors
- Info from Master-pilot exchange
- Info from terminal operator
- Info from other service providers

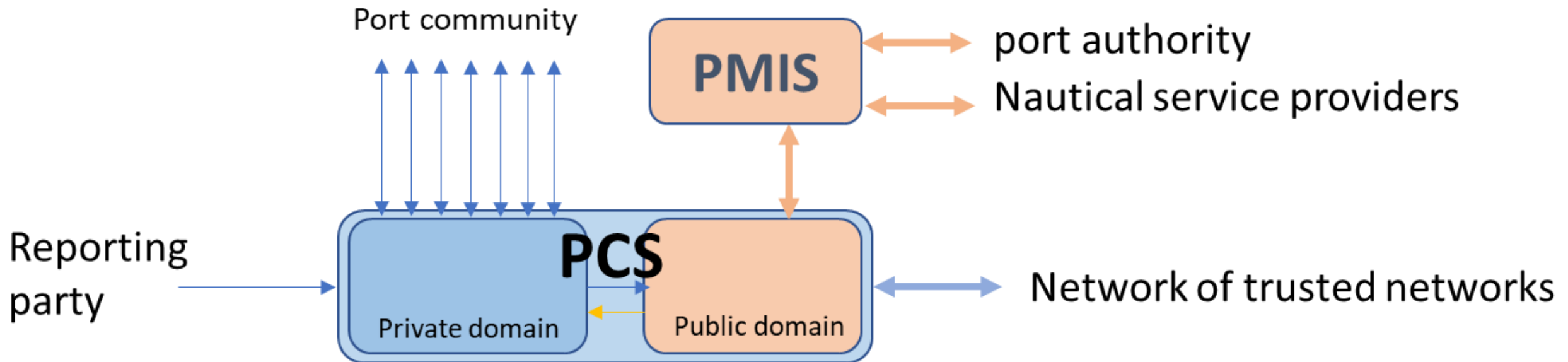
PCS as a Single Submission Portal



1: reporting once only for business purposes, and for fulfilling reporting requirements

2: reporting once only for fulfilling reporting requirements of national public authorities

Port Community System ≠ Port Management Information System





Courtesy Rotterdam Pilots

Thanks for your attention

